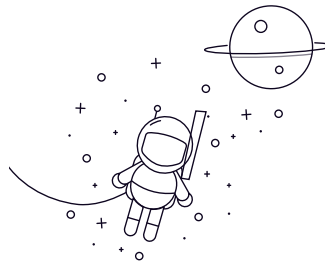


## Self-aligning Ball Bearing (ZrO2)



Selezionare Inchiesta	Cuscinetto n	Dimentions(mm)					Mounting Dimentions(mm)		Reference Weight(kg)
		D	D	B	r(min)	da min	Da max	ra max	
135	5	19	6	0.3	7	17	0.3	0.007	
126	6	19	6	0.3	8	17	0.3	0.007	
127	7	22	7	0.3	9	20	0.3	0.011	
108	8	22	7	0.3	10	20	0.3	0.011	
129	9	26	8	0.6	13	22	0.6	0.017	
1200	10	30	9	0.6	14	26	0.6	0.026	
2200	10	30	14	0.6	14	26	0.6	0.036	
1300	10	25	11	0.6	14	31	0.6	0.045	
2300	10	25	17	0.6	14	31	0.6	0.065	
1201	12	32	10	0.6	16	28	0.6	0.031	
2201	12	32	14	0.6	16	28	0.6	0.041	
1301	12	37	12	1	17	32	1	0.052	
2301	12	37	17	1	17	32	1	0.073	
1202	15	35	11	0.6	19	31	0.6	0.038	
2202	15	35	14	0.6	19	31	0.6	0.046	
1302	15	42	13	1	20	37	1	0.072	
2302	15	42	17	1	20	37	1	0.088	
1203	17	40	12	0.6	21	36	0.6	0.056	
2203	17	40	16	0.6	21	36	0.6	0.068	
1303	17	47	14	1	22	42	1	0.1	
2303	17	47	19	1	22	42	1	0.12	
1204	20	47	14	1	25	42	1	0.09	
2204	20	47	18	1	25	42	1	0.11	
1304	20	52	15	1.1	26.5	45.5	1	0.13	
1304	20	52	21	1.1	26.5	45.5	1	0.16	

### Self-aligning Ball Bearing (ZrO2)

1205	25	52	15	1	30	47	1	0.11
2205	25	52	18	1	30	47	1	0.13
1305	25	62	17	1.1	31.5	55.5	1	0.2
2305	25	62	24	1.1	31.5	55.5	1	0.26
1206	30	62	16	1	35	57	1	0.17