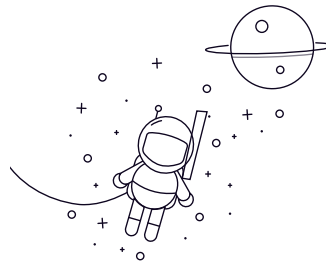
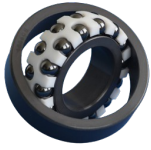


## Self-aligning Ball Bearing (Si3N4)



Selezionare Inchiesta	Tojo Number	Dimentions (mm)					Mounting Dimentions (mm)			Ref. Weight (kg)
		D	D	B	r(min)	da min	Da massimo	ra massimo		
2200	10	30	14	0.6	14	26	0.6	0.019		
1200	10	30	9	0.6	14	26	0.6	0.014		
129	9	26	8	0.6	13	22	0.6	0.009		
108	8	22	7	0.3	10	20	0.3	0.006		
127	7	22	7	0.3	9	20	0.3	0.006		
126	6	19	6	0.3	8	17	0.3	0.004		
135	5	19	6	0.3	7	17	0.3	0.004		
1300	10	25	11	0.6	14	31	0.6	0.024		
2300	10	25	17	0.6	14	31	0.6	0.035		
1201	12	32	10	0.6	16	28	0.6	0.016		
2201	12	32	14	0.6	16	28	0.6	0.022		
1301	12	37	12	1	17	32	1	0.027		
2301	12	37	17	1	17	32	1	0.039		
1202	15	35	11	0.6	19	31	0.6	0.02		
2202	15	35	14	0.6	19	31	0.6	0.025		
1302	15	42	13	1	20	37	1	0.039		
2302	15	42	17	1	20	37	1	0.047		
1203	17	40	12	0.6	21	36	0.6	0.03		
2203	17	40	16	0.6	21	36	0.6	0.036		
1303	17	47	14	1	22	42	1	0.053		
2303	17	47	19	1	22	42	1	0.065		

Self-aligning Ball Bearing (Si3N4)

1204	20	47	14	1	25	42	1	0.049
2204	20	47	18	1	25	42	1	0.057
1304	20	52	15	1.1	26.5	45.5	1	0.067
1304	20	52	21	1.1	26.5	45.5	1	0.086
1205	25	52	15	1	30	47	1	0.058
2205	25	52	18	1	30	47	1	0.067
1305	25	62	17	1.1	31.5	55.5	1	0.11
2305	25	62	24	1.1	31.5	55.5	1	0.14
1206	30	62	16	1	35	57	1	0.09