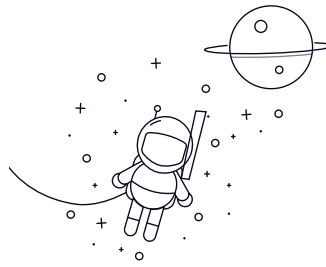


Double-Row Angular Contact Ball Bearing (SSiC)



| Selezionare Inchiesta Tojo Number | | | Dimentions (mm) | | | | Mounting Dimentions (mm) | |
|-----------------------------------|----|-----|-----------------|-----|----|---------|--------------------------|------------|
| | | | D | D | B | r (min) | da min | Da massimo |
| 5200 | 10 | 30 | 14.3 | 0.6 | 15 | 25 | 0.6 | |
| 5201 | 12 | 32 | 15.9 | 0.6 | 17 | 27 | 0.6 | |
| 5202 | 15 | 35 | 15.9 | 0.6 | 20 | 30 | 0.6 | |
| 5302 | 15 | 42 | 19 | 1 | 21 | 36 | 1 | |
| 5203 | 17 | 40 | 17.5 | 0.6 | 22 | 35 | 0.6 | |
| 5303 | 17 | 47 | 22.2 | 1 | 23 | 41 | 1 | |
| 5204 | 20 | 47 | 20.6 | 1 | 26 | 41 | 1 | |
| 5304 | 20 | 52 | 22.2 | 1.1 | 27 | 45 | 1 | |
| 5205 | 25 | 52 | 20.6 | 1 | 31 | 46 | 1 | |
| 5305 | 25 | 62 | 25.4 | 1.1 | 32 | 55 | 1 | |
| 5206 | 30 | 62 | 23.8 | 1 | 36 | 56 | 1 | |
| 5306 | 30 | 72 | 30.2 | 1.1 | 37 | 65 | 1 | |
| 5207 | 35 | 72 | 27 | 1.1 | 42 | 65 | 1 | |
| 5307 | 35 | 80 | 34.9 | 1.5 | 44 | 71 | 1.5 | |
| 5208 | 40 | 80 | 30.2 | 1.1 | 47 | 73 | 1 | |
| 5308 | 40 | 90 | 36.5 | 1.5 | 49 | 81 | 1.5 | |
| 5209 | 45 | 85 | 30.2 | 1.1 | 52 | 78 | 1 | |
| 5309 | 45 | 100 | 39.7 | 1.5 | 54 | 91 | 1.5 | |
| 5210 | 50 | 90 | 30.2 | 1.1 | 57 | 83 | 1 | |
| 5310 | 50 | 110 | 44.4 | 2 | 60 | 100 | 2 | |
| 5211 | 55 | 100 | 33.3 | 1.5 | 64 | 91 | 1.5 | |

Double-Row Angular Contact Ball Bearing (SSiC)

| | | | | | | | |
|------|----|-----|-------|-----|----|-----|-----|
| 5311 | 55 | 120 | 49.2 | 2 | 65 | 110 | 2 |
| 5212 | 60 | 110 | 36.5 | 1.5 | 69 | 101 | 1.5 |
| 5312 | 60 | 130 | 54 | 2.1 | 72 | 118 | 2 |
| 5213 | 65 | 120 | 38.1 | 1.5 | 74 | 111 | 1.5 |
| 5313 | 65 | 140 | 58.74 | 2.1 | 77 | 128 | 2 |